

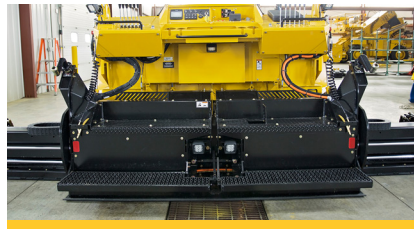
P265

COMMERCIAL PAVER



SIMPLE OPERATION.

Mechanical controls provide simple and reliable operation. Push button keypads for feeder system and cable operated ground drive controls allow operation from either side of the machine.



HEAVY DUTY SCREED.

The Weiler designed 3,000 lb (1,360 kg) screed delivers outstanding mat quality and a paving range of 7' 8" (2.3 m) to 14' 4" (4.4 m). Weiler's patented end gate design allows quick adjustments for extension height and joint matching.



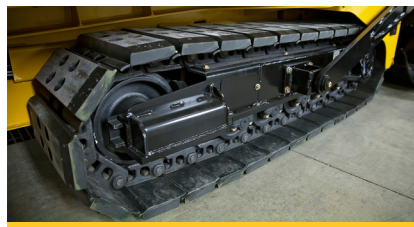
PRECISE CONTROL.

Screed mounted upper and lower 9" (228 mm) augers and independent control of each side of the delivery system provide precise material control for variable width paving. Flow gate style cut-off doors and reversible augers and conveyors limit spillage between passes.



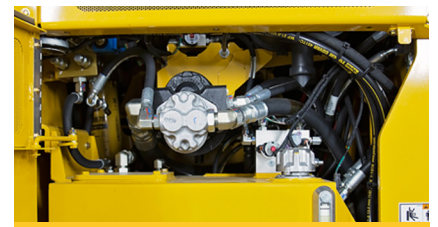
DURABLE COMPONENTS.

Highway class chains, conveyor and auger bearings and direct-drive conveyor head shaft provide long-term reliability. Replaceable components maximize the life of the paver.



POWER TO PUSH.

Cat® C3.4B Tier 4 engine with 74 hp (55 kW) powers the best-in-class 70" (1778 mm) track length undercarriage through a 2-speed hydrostatic drive. Optional 14" (356 mm) performance, poly pads and standard 125 mm track chain pitch optimize the ride with a 250 fpm (76 mpm) max transport speed.



FAST SERVICE.

Remote grease lines, spray down system with four (4) coiled hoses located on each corner of the paver, five (5) engine access doors and Caterpillar dealer service and support keep your machine up and running with limited machine down time.

P265 SPECIFICATIONS

WEIGHT	16,200 lb	7348 kg	SCREED WEIGHT	3,000 lb	1360 kg	ENGINE	Cat® C3.4B Tier 4F
LENGTH	12' 7"	3835 mm	MAIN PLATE WIDTH	16.5"	419 mm	PAVING SPEED	150 fpm 45 mpm
WIDTH	98"	2489 mm	EXTENSION PLATE WIDTH	9"	228 mm	TRANSPORT SPEED	250 fpm 76 mpm
HEIGHT	70"	1778 mm	SCREED HEAT	Electric - 4 elements	FUEL CAPACITY	26 gal 98 L	
TRUCK CLEARANCE	18"	457 mm	VIBRATION	1 x 2500 vpm	HYDRAULIC CAPACITY	30 gal 113 L	
AUGER DIAMETER	9"	228 mm	AUGER SPEED	110 rpm			

POWERTRAIN

Cat® C3.4B Tier 4F engine with 74 hp (55 kW) and no DEF
2-Speed hydrostatic drive, 250 fpm (76 mpm) transport speed
Automatic track tensioning
70" (1778 mm) track length with 53" (1346 mm) of ground contact
14" (356 mm) performance, poly track pad option
5 track rollers per side
125 mm track chain pitch
Hydraulically driven 12 kW generator

OPERATING ENVIRONMENT

Dual side operation
Cable operated ground drive controls
Push button keypads for feeder system
LCD display provides conditions and diagnostics
Pause mode enables return to same settings

MATERIAL DELIVERY

7-ton (6.35 mt) hopper
Replaceable floor plates
Heavy-duty chains and flight bars
Direct-drive conveyor head shaft
Reversible augers and conveyors
Flow gate style cut-off door
Independent auger and conveyor control
Adjustable push roller
Independent hopper control

SALES AND SERVICE

Sold and serviced exclusively through Caterpillar dealers worldwide.

SCREED

7' 8" (2.3 m) to 14' 4" (4.4 m) standard paving width
4 element electric heated screed
3/8" (9.5 mm) thick screed plates
Screed mounted upper and lower 9" (228 mm) augers
Sonic feed sensors optional
Manual crown adjustment (+-3%)
Folding rear walkway
Patented end gate design

SERVICE/MAINTENANCE

8-gal (30 L) spray down system with 4 coiled hoses
Braided electrical harnesses and sealed connections
Color-coded electrical wires
12-volt electric system with automotive-type fuses
Remote grease fittings
5 engine access doors
Lockable vandal cover and engine access doors

OPTIONAL EQUIPMENT

14" (356 mm) poly track pads
LED strobe light
Work lights (4)
Premium LED lights (8)
Sonic controlled augers
Heated end gates

WARRANTY

12 months standard. Extended warranty available.